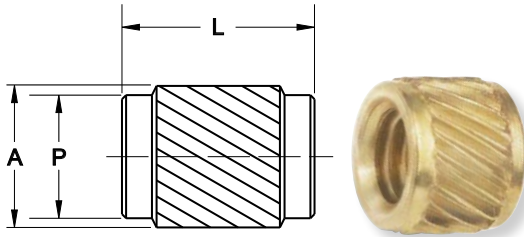
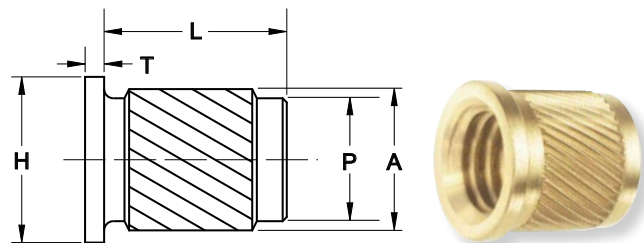


Series 50



Series 51



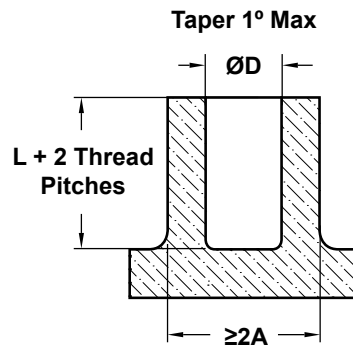
DIMENSIONAL DATA

LEGEND

Inch
Metric Conversion

Thread Size		A Overknurl Ø		P Pilot Ø		L Length		T Head Thickness		H Head Ø		D* Rec. Hole Ø	
Tolerance ▶		Ref.		±.003	±0.08	±.005	±0.13	±.003	±0.08	±.003	±0.08	+0.03	+0.08
2-56	M2 x 0.4	.134	3.40	.121	3.07	.125	3.18	.018	0.46	.185	4.70	.124	3.15
4-40	M2.5 x 0.45 M3 x 0.5	.165	4.19	.152	3.86	.140	3.56	.021	0.53	.216	5.49	.155	3.94
6-32	M3.5 x 0.6	.196	4.98	.183	4.65	.150	3.81	.027	0.69	.247	6.27	.186	4.72
8-32	M4 x 0.7	.227	5.77	.214	5.44	.185	4.70	.033	0.84	.278	7.06	.217	5.51
10-24 10-32	M5 x 0.8	.259	6.58	.246	6.25	.250	6.35	.040	1.02	.310	7.87	.249	6.32
1/4-20	M6 x 1.0	.321	8.15	.308	7.82	.312	7.92	.050	1.27	.372	9.45	.311	7.90
5/16-18	M8 x 1.25	.384	9.75	.371	9.42	.375	9.53	.050	1.27	.435	11.05	.374	9.50

Recommended Hole Design*



* See page 5 for more information
on recommended hole design

To Order: INS (Series #)/Thread Size / Length, Material, Finish
Example: INS 51/M4 / .185 EK